



Gold Hill-Filing 11



BIRMINGHAM



1738 Gold Hill Mesa Dr. Lot 5 \$609,888 READY NOW!
BIRMINGHAM, Craftsman Elev. 2 Story Floorplan, Finished Basement w/9' Ceiling. Fully Landscaped. **UTOUR-SELF TOUR- RATE INCENTIVE**
4 BEDS - 4 BATHS - 2 CAR TUCK UNDER GARAGE - 2,907 SQ FT - MLS 5894770



SHEFFIELD



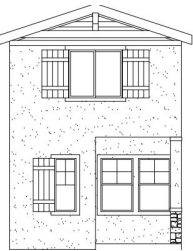
1754 Gold Hill Mesa Dr. Lot 3 \$579,888 READY NOW!
SHEFFIELD, Farmhouse Elev. Ranch Floorplan, Finished Basement with 9' Ceiling. Fully Landscaped. **UTOUR-SELF TOUR-RATE INCENTIVE**
3 BEDS - 3 BATHS - 2 CAR TUCK UNDER GARAGE - 2,429 SQ FT - MLS 7831732



DERBY



1714 Gold Hill Mesa Dr. Lot 8 \$549,888 Model Home -READY NOW!
DERBY Cottage Farmhouse Elev. 2 Story Floorplan, Crawl Space **3 BEDS - 2.5 BATHS - STUDY - 1 CAR DETACHED GARAGE - 1,967 SQ FT**
Fully Landscaped. **MLS 8160766**



Coventry



Gold Hill-Filing 12

228 N. Olympian Dr. Lot 180 \$503,888 TO BE BUILT
Coventry, Cottage Craftsman Elev. 2 Story Floorplan, Crawl Space, Includes Xeriscape Landscaping.
3 BEDS - 2.5 BATHS - 1 CAR DETACHED GARAGE - 1,155 SQ FT - MLS Coming



YORK



218 N. Olympian Dr. Lot 181 \$419,888 READY NOW!
YORK, Cottage Craftsman Elev. 2 Story Floorplan, Crawl Space Includes Xeriscape Landscaping. **UTOUR-SELF TOUR**
2 BEDS - 2.5 BATHS - 1 CAR DETACHED GARAGE - 1,114 SQ FT -



GOLD HILL
MODEL HOME: DERBY
1714 Gold Hill Mesa Dr
Colorado Springs, CO
80905

MODEL HOURS:
By Appt only.

Adam Wells
Sales Associate
719-287-8700
Adam@VanguardNewHomes.com

Pricing, Availability, and Completion Dates are subject to change at anytime without notice 6.9.26

www.VanguardNewHomes.com