



VANGUARD

Homes

'van-gård: at the forefront

COLCHESTER

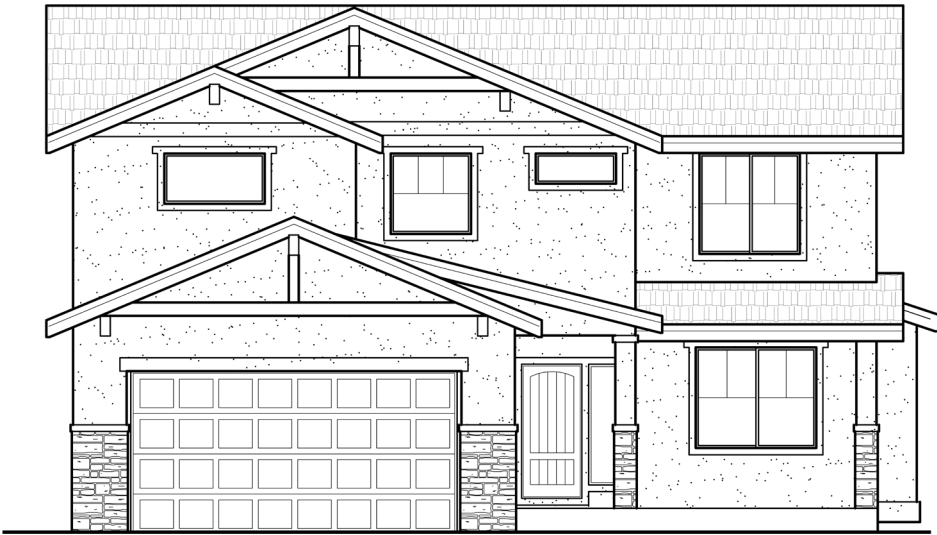
Elevations

4 - 5 Bedrooms

3 Bathrooms

2 - 3 Car Garage

3,415 Sq.Ft. / 2,342 Sq. Ft. Finished



Craftsman



Prairie



VANGUARD

Homes

'van-gard: at the forefront

COLCHESTER

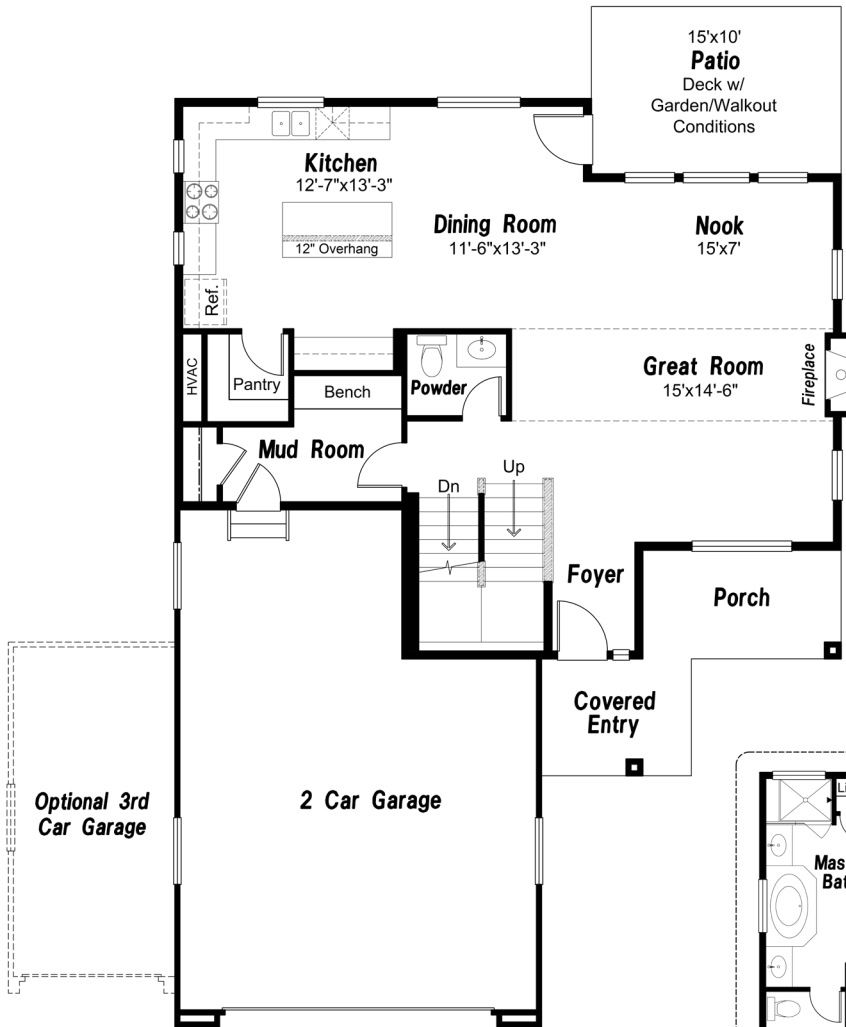
Floorplan

4 - 5 Bedrooms

3 Bathrooms

2 - 3 Car Garage

3,415 Sq.Ft. / 2,342 Sq. Ft. Finished



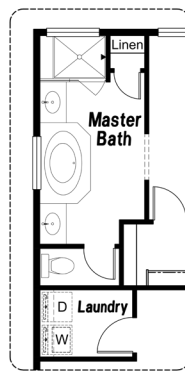
Main Level

1078 FINISHED SQ. FT.

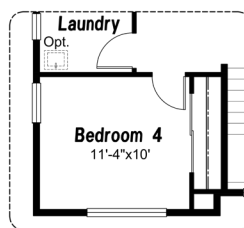


OPTIONAL FINISHED Lower Level

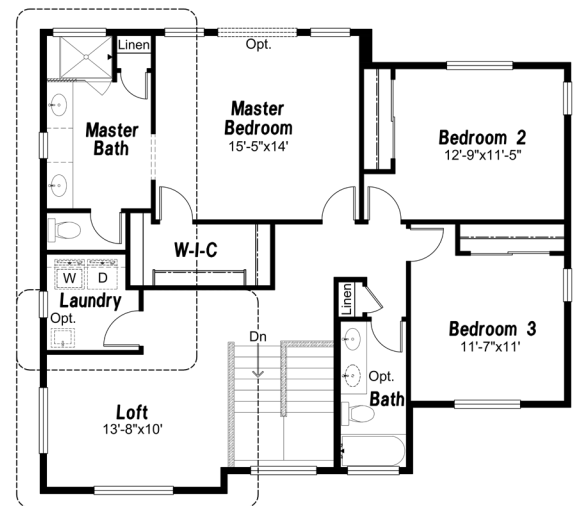
887 FINISHED SQ. FT.
186 UNFINISHED SQ. FT.



Optional
5 Piece Bath



Optional
Bedroom 4



Upper Level

1264 FINISHED SQ. FT.